

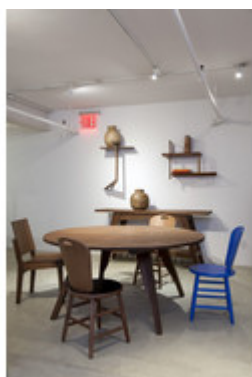
## Timbó Round Dining Table

by Carlos Motta, 2010



**Reference:** #00001593

The "Timbó" dining table features simple lines and generous proportions. In designing the "Timbó" line, Carlos Motta aligned a starkly straightforward design with durability. The designer firmly believes in making a collection "that values simplicity, made to last. The all-weather pieces from the collection are moisture resistant and very low-maintenance, making them ideal for use in outdoor settings and recreation areas.



### Dimensions

Ø 63" x H 30"

---

Ø 47" x H 30"

### Finishes

Wood



*Colors shown are only indicative and may not be an accurate representation of the finishing due to variations in system/s used and/or display settings.*