

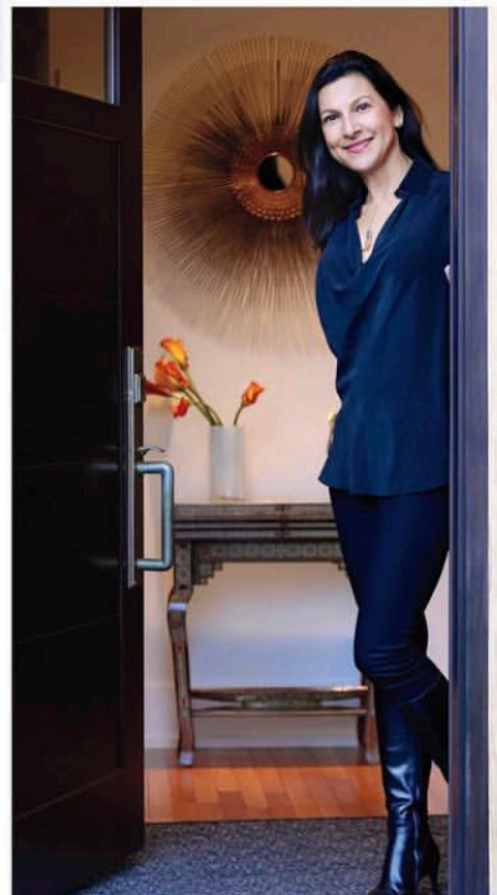


DESIGNED WITH A MODERN LIFESTYLE  
IN MIND, MARCIA TUCKER'S HOME  
SERVES AS A BACKDROP FOR LIVING

# RHYTHM OF LIFE

BY JAMIE MARSHALL | PHOTOGRAPHS BY COSTAS PICADAS

COTTAGES&GARDENS



**Neutral Space** In the living room (OPPOSITE PAGE AND BELOW), a custom sofa wears a Zimmer + Rohde linen, while a love seat sports a Loro Piana fabric. The Designer Guild silk drapes are reversible. A Ralph Pucci orange fabric covers a Vladimir Kagan chair, and the stool is by Eitel Carmona. The fireplace is crafted from black granite and walnut veneer.

**Diverse Menu** (RIGHT) In the dining room, an Ochre chandelier centers over a Holly Hunt dining table; chairs are through the Bright Group and are covered in a Dedar fabric. The wood bench is by Hugo França. See Resources.



**W**HEN THEY FIRST SET EYES ON the modest 1920s Cape in Old Greenwich, Marcia Tucker and her husband were drawn to the home's classic white clapboard façade and the quiet neighborhood setting within walking distance of the shops and train station. That was in 2003, when they were in the process of moving to Connecticut from London with their two young boys. "We loved the feeling of the house," recalls Tucker. "It had a lot of windows and a lot of light, but it wasn't built for our lifestyle and aesthetic. It needed to be adjusted to a more modern way of living."

For the Brazilian-born designer, that meant tearing down walls, replacing windows and doors, removing crown molding and dated paneling, and replacing the electrical, plumbing and HVAC. She also eliminated the small coat closet in the entry, which opened up the foyer; had a glass railing made for the stairs, and swapped out the traditional wood mantel with a more contemporary walnut veneer. "I have stages in my life as a designer," she says. "I fell in love with walnut, and it became my favorite wood."

Over time, additional changes included turning a two-car garage into a family living space off the kitchen and carving a formal square courtyard out of a shared driveway. "The house looks small from the outside, but it's super spacious inside and has a really long backyard," Tucker says.

With its open floor plan and contemporary furnishings, the interiors are sophisticated and modern, bright and cheerful. "It's a place for our boys to welcome their friends and for us to welcome ours," Tucker says. Each room features a mix of custom and iconic pieces: In the living room, for instance, the Zimmer + Rohde-covered sofa was originally designed for a Greenwich

