



INTERNATIONAL DESIGN CULTURE 国际设计文化

COISO

国际家居
INTERNATIONAL

107 2013 05/06



生日快乐DROOG

HAPPY BIRTHDAY DROOG



ISSN 1008-4460



国际标准刊号 ISSN 1008-4460 国内统一刊号 CN51-1543/GD 价格 人民币 RMB 40 香港 HKS 50 欧洲 €15



Tribeca Fractal Pad

Designed by Architecture
in Formation

不规则城市公寓





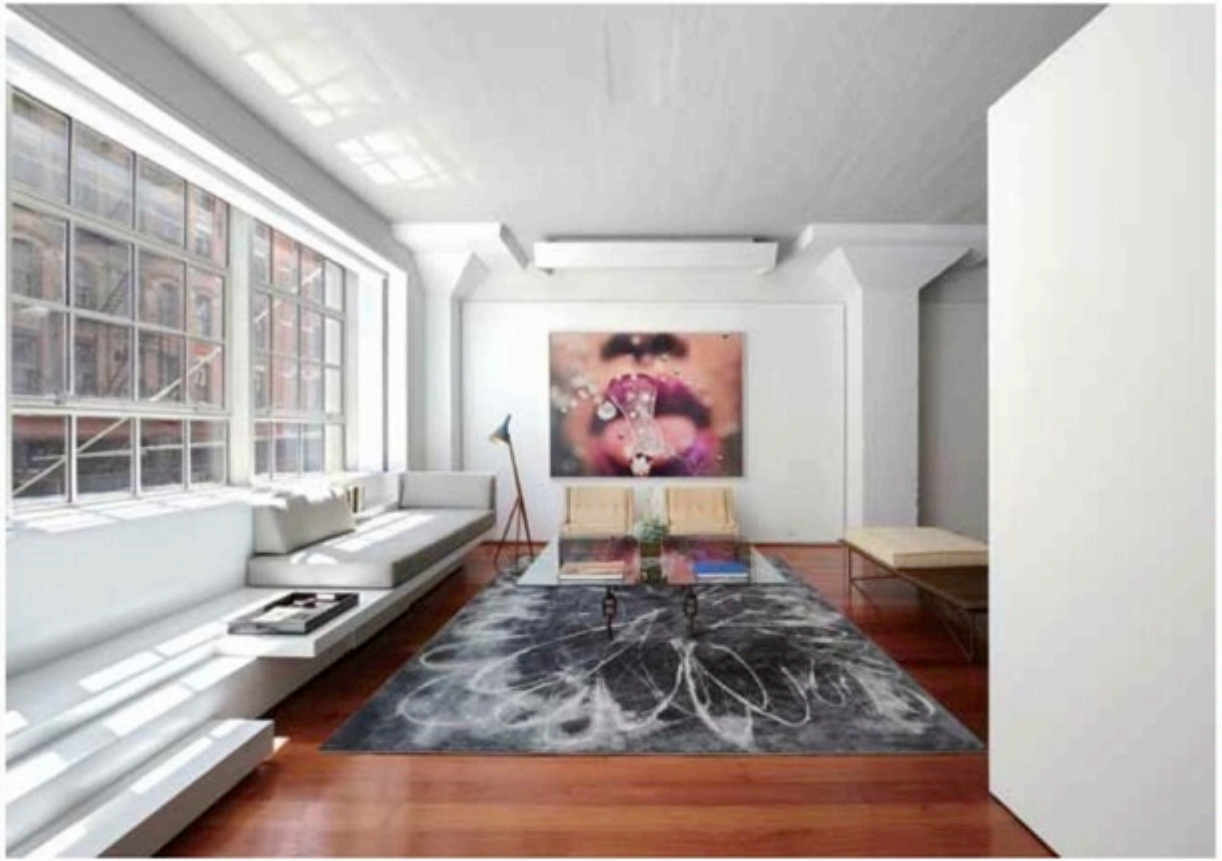


文：牛茜 图片：

对于任何一个年轻白领而言，能够在城市的繁华地段拥有一套理想的单身公寓都将会是一件梦寐以求的事情，这间公寓的主人——一位少年有成的华尔街商品交易员显然就是那其中幸运的一员：在鳞次栉比的高楼大厦之间拥有一片只属于自己的私密空间，远离城市的喧嚣和外部世界的繁华。为了满足客户的需求，设计师借鉴了远古时代人类生活的柏拉图洞穴的一些概念，将精致的抽象室内创意有意识地与外部世界的压力剥离开来，光影交错的美丽与神秘，让人不时会产生出一种幻觉：也许那缤纷亦如这里的外部世界根本就不存在。

这间公寓原本是一个面积为 3000 平方英尺的 Loft，位于特里贝克区最受当地居民喜爱的 Loft 群之中。但其现有的居住空间有着太多亟待解决的设计问题，其中最重要的便是所有房间的窗户都位于一面 75 英寸高的朝南的建筑立面上，这也就意味着自然光是绝不可能有机会穿过房间照射到朝北的区域。然而，令人感到惊奇的是客户却被这一缺点所吸引。

就这种构造而言，整个公寓表面上就像是一个“洞穴”。因此，在进行整体设计之前设计师做了大量的 3D 设计和数字建模，并由此对所有所需材料的可用性做了相关测试。除此之外，设计师还对照明提出了相应的设计方案（通过可收缩的 PVC 投影技术和具有背光效果的杜邦板进行采光）。最终，一个宏伟中蕴含温馨的城市家居就此诞生了，其中包括着所有的生活所需，全面中彰显出了细节。精致而粗犷、神圣中也透出了一种凡尘的感觉、科技与手工工艺的混搭以及艺术中的生活质感，正是这些细枝末节的元素将整间公寓的室内布置得别致精心。而公寓中所选用的家具均产自巴西，用时尚现代的设计来宣告 Espasso 独特的所在。





This project is about a highly glamorised domestic typology: the urban bachelor pad. The client, a very young and successful Wall Street commodities trader wanted to create an entirely interior landscape away from the city and the outside world. The architect's response was to consider the experience of this primary residence as a daily return to Plato's Cave, as the conscious exfoliation of exterior stresses through the creation of an enveloping abstract domestic landscape, where light and shadow could simply be appreciated for their beauty and mystery, and the outside world could cease to exist.

The original existing 3000 SF loft was quite simply, a 'developer special'. While located within one of the most sought-after residential loft buildings in Tribeca, the existing residential space had serious issues: most significantly, there were windows at only one end of the 75' long space, meaning natural light had no way

of reaching the northern half of the interior. Ironically, that was the attraction to the client.

The entire project was ostensibly 'carved' around the existing structure, and could not have been conceived without extensive 3D and parametric modeling that allowed us to test a range of material possibilities within the confines of budget, light emitting characteristics (the shrink-wrapped PVC projection cloud and a range of back-lit Corian elements). The final product is an ambitious endeavor exploring the subtleties and complexities of urban domesticity. Polished and raw, sacred and profane, mechanical and artisanal, UV and DPI, art and life: these are elements at play in this carefully curated domestic landscape.

All the furniture featured in this space is Brazilian, modern and contemporary Brazilian design being what Espasso specialises in.

